



**CONNOR® SPORTS**

# **HARDWOOD SYSTEMS**

## **SMARTSTEP™**

**FIXED RESILIENT SYSTEM**



CERTIFIED  
BY THESE  
LEADERS  
IN SPORT



[connorsports.com/hardwood](http://connorsports.com/hardwood)

# SMARTSTEP™

## FIXED RESILIENT SYSTEM

Connor Sports • 800.283.9522 • 847.290.9020 • info@connorsports.com • connorsports.com/hardwood



The SmartStep system provides pre-assembled sleeper subfloor panels including resilient Rezill pads spaced at nominally 8" on center at a rate of two pads per square foot.

Machined anchor pockets allow for substrate attachment to provide desired environmental stability.

### SMARTSTEP FIXED RESILIENT SYSTEM



**Performance Status:**  
Meets or exceeds  
all the requirements  
of DIN 18032, part 2



#### ANCHORAGE

Singular Pinned Heavy-Duty  
Concrete Anchors with  
Anti-Squeak collars

#### FLOORING

MFMA Northern  
Hard Maple

#### RESILIENCE

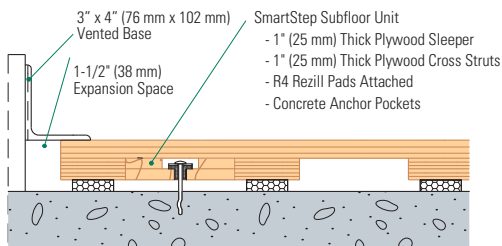
Rezill Pads for Excellent Resilient  
Life and Loading

#### SUBFLOOR CONSTRUCTION

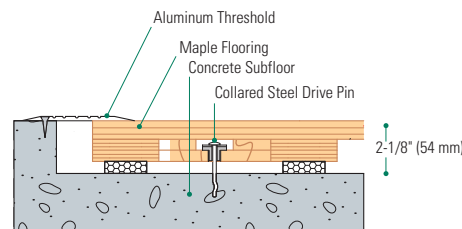
ISO 9001:2008 Manufactured Subfloor Assemblies

**Slab Depression:** 25/32" (20 mm) flooring - 2 1/8" (54 mm) • 33/32" (26 mm) flooring - 2 3/4" (60 mm)

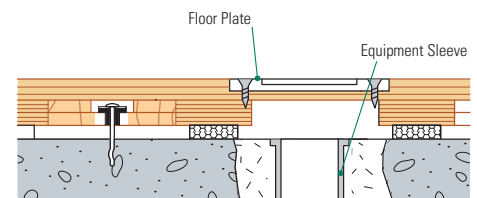
#### Wall Base Detail



#### Threshold Detail ( Optional Accessory )



#### Equipment Detail ( Optional Accessory )



**Manufacturing:**  
ISO 9001:2008  
CERTIFIED  
ISO 14001:2004  
CERTIFIED



**Recycled Contribution:**  
SmartStep Subfloor System  
includes components with  
recycled content



**Testing Laboratory:**  
United States Sports  
Surfacing Laboratory



**Certified Testing:**  
ISSS Scientific  
Body Membership



**Green Status**  
Managed Forests,  
Certification Available



**Environmental Product Declaration**  
The First Sports Floor Manufacturer to Publish  
UL Certified Product-Specific Environmental  
Performance In Compliance with LEED V.4