

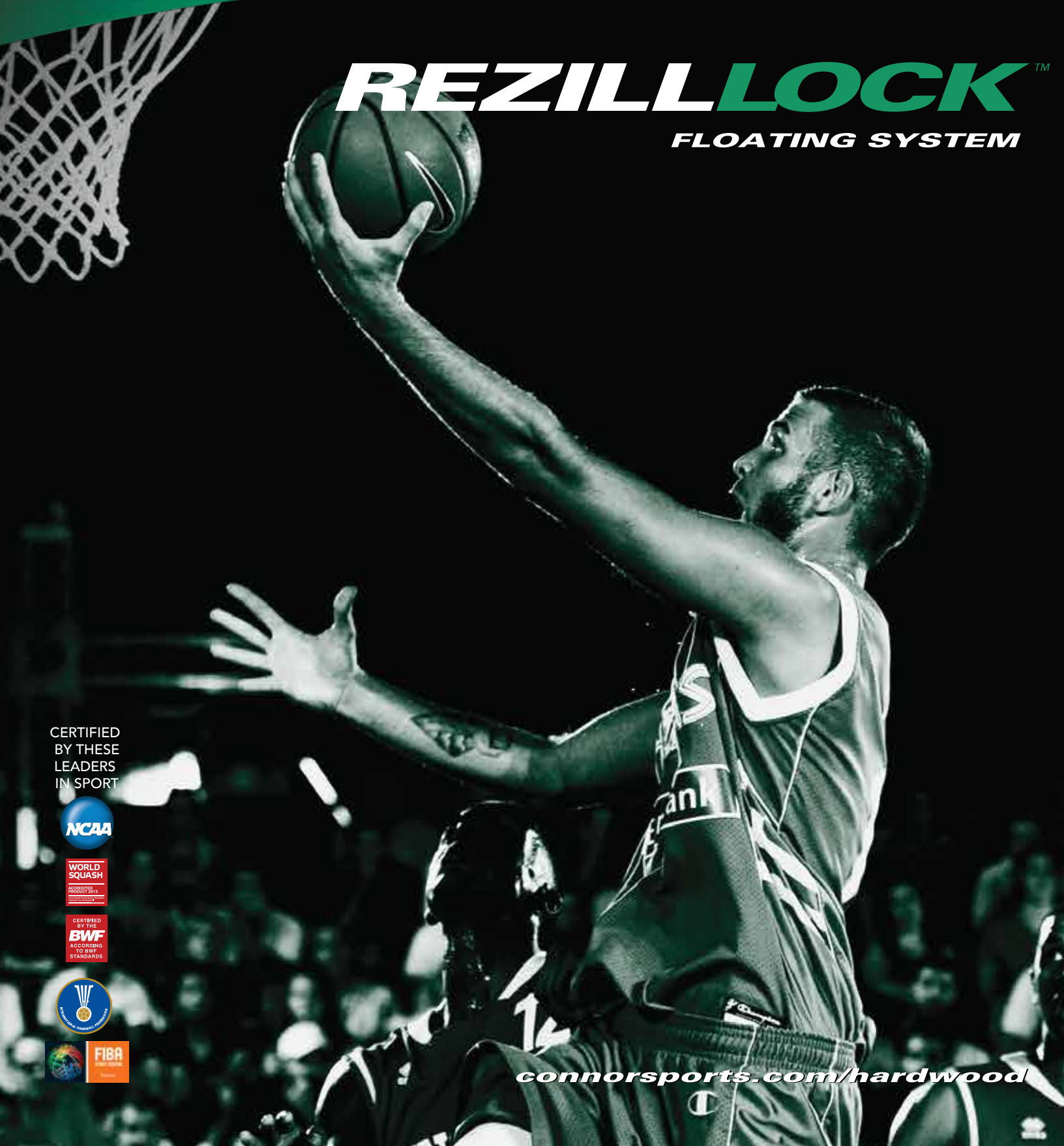


CONNOR® SPORTS

**HARDWOOD
SYSTEMS**

REZILLLOCK™

FLOATING SYSTEM



CERTIFIED
BY THESE
LEADERS
IN SPORT



connorsports.com/hardwood

REZILLLOCK™

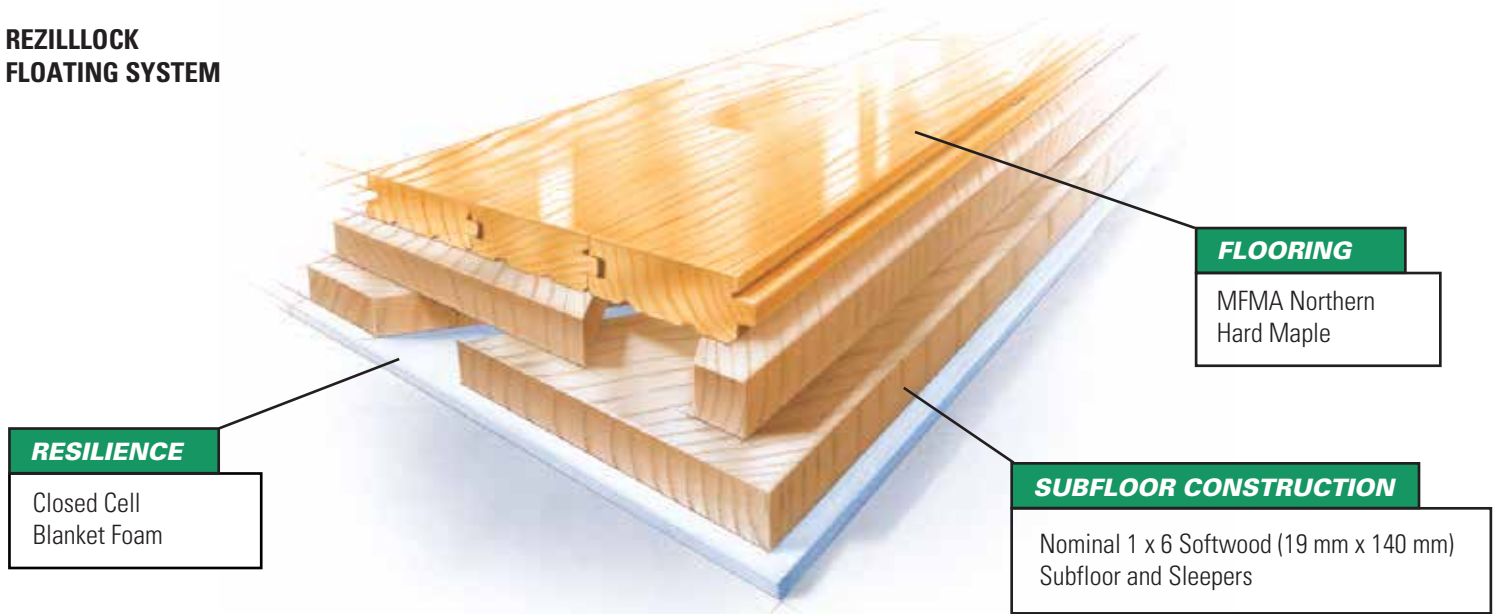
FLOATING SYSTEM

Connor Sports • 800.283.9522 • 847.290.9020 • info@connorsports.com • connorsports.com/hardwood



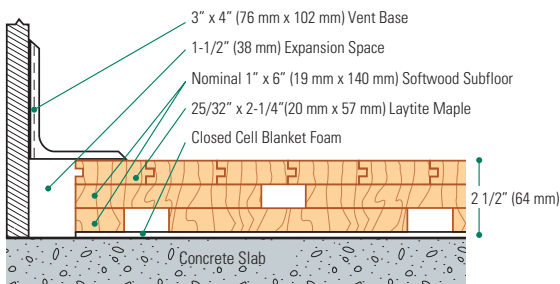
RezillLock provides a basketweave design of dimension softwood layers resting on a blanket of low density closed cell polyethylene foam.

REZILLLOCK FLOATING SYSTEM

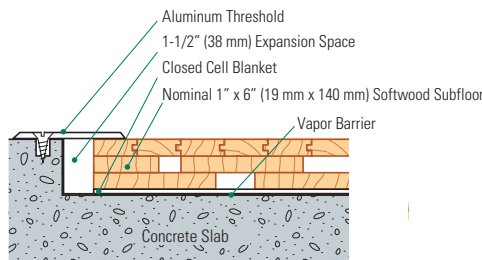


Slab Depression: 25/32" (20 mm) flooring – 2 1/2" (64 mm) • 33/32" (26 mm) flooring – 2 3/4" (70 mm) • Adjust slab depression accordingly when replacing 1/4" (6 mm) foam with other thickness

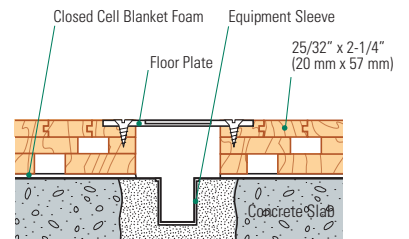
Wall Base Detail



Threshold Detail (Optional Accessory)



Equipment Detail (Optional Accessory)



Manufacturing:
ISO 9001:2008
CERTIFIED
ISO 14001:2004
CERTIFIED



Testing Laboratory:
United States Sports
Surfacing Laboratory



Certified Testing:
ISSS Scientific
Body Membership



Green Status
Managed Forests,
Certification Available



Environmental Product Declaration
The First Sports Floor Manufacturer to Publish
UL Certified Product-Specific Environmental
Performance In Compliance with LEED V.4