

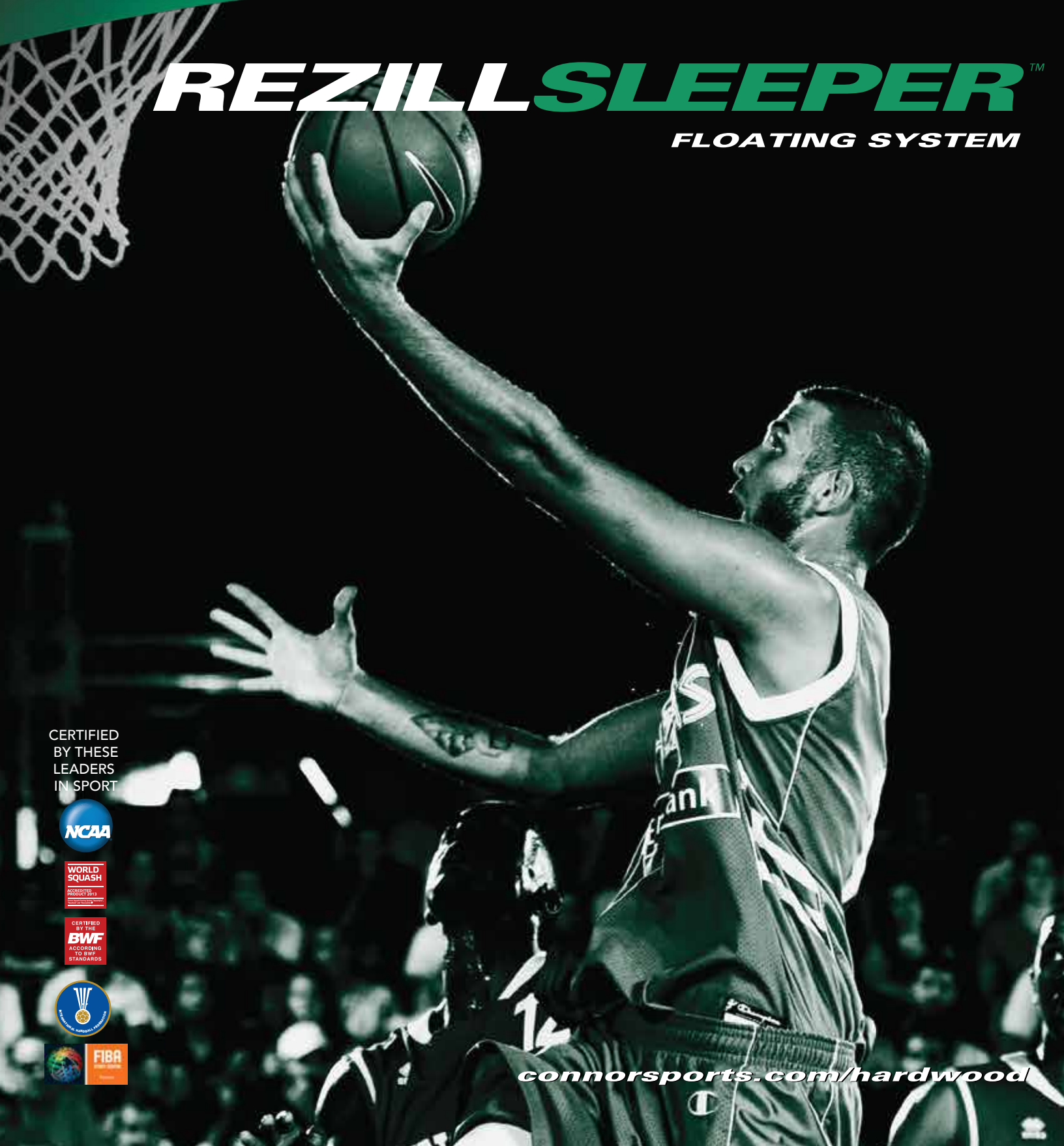


CONNOR SPORTS

**HARDWOOD
SYSTEMS**

REZILLSLEEPER™

FLOATING SYSTEM



CERTIFIED
BY THESE
LEADERS
IN SPORT



connorsports.com/hardwood

REZILLSLEEPER™

FLOATING SYSTEM

Connor Sports • 800.283.9522 • 847.290.9020 • info@connorsports.com • connorsports.com/hardwood

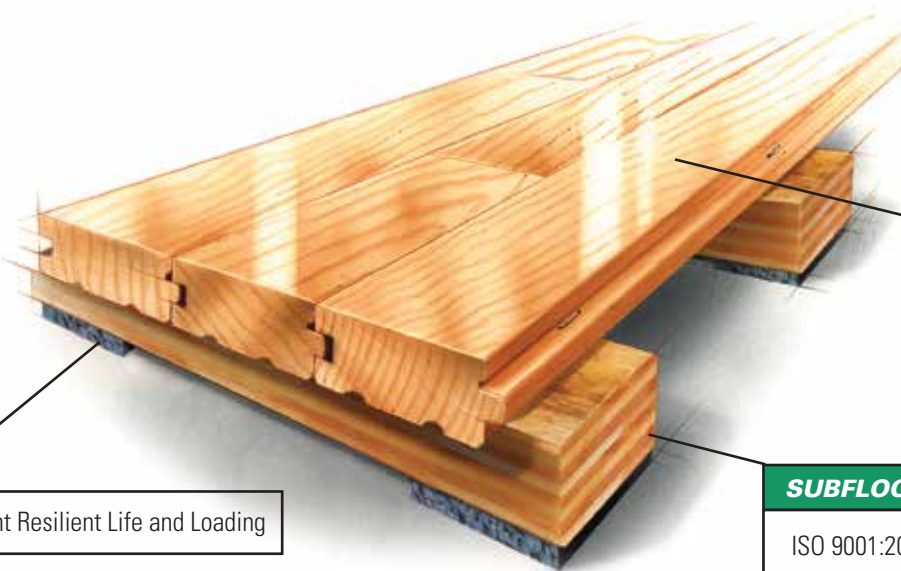


RezillSleeper includes sound UL grade plywood sleepers supported by resilient Rezill pads. Plywood sleepers provide resistance to bowing and twisting as commonly associated with softwood dimensioned sleepers.

REZILLSLEEPER FLOATING SYSTEM



Performance Status:
Meets or exceeds
all the requirements
of DIN 18032, part 2



RESILIENCE

Rezill Pads for Excellent Resilient Life and Loading

FLOORING

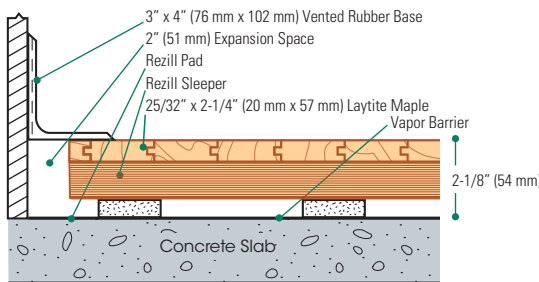
MFMA Northern
Hard Maple

SUBFLOOR CONSTRUCTION

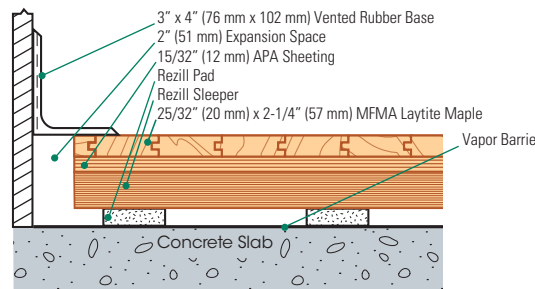
ISO 9001:2008 Manufactured Plywood Sleepers

Slab Depression: 25/32" (20 mm) flooring - 2 1/8" (54 mm) • 33/32" (26 mm) flooring - 2 3/8" (60 mm) • Adjust if adding plywood

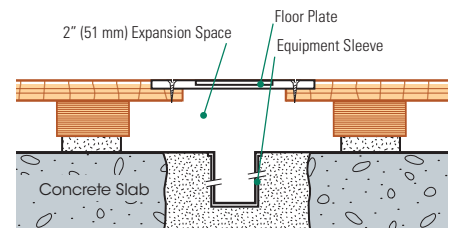
Wall Base Detail



Wall Base Detail (Rezill Sleeper Subfloor)



Equipment Detail (Optional Accessory)



Manufacturing:
ISO 9001:2008
CERTIFIED
ISO 14001:2004
CERTIFIED



Recycled Contribution:
RezillSleeper Subfloor System
includes components with
recycled content



Testing Laboratory:
United States Sports
Surfacing Laboratory



Certified Testing:
ISSS Scientific
Body Membership



Green Status
Managed Forests,
Certification Available



Environmental Product Declaration
The first sports floor manufacturer to publish
UL certified product-specific environmental
performance in compliance with LEED V.4