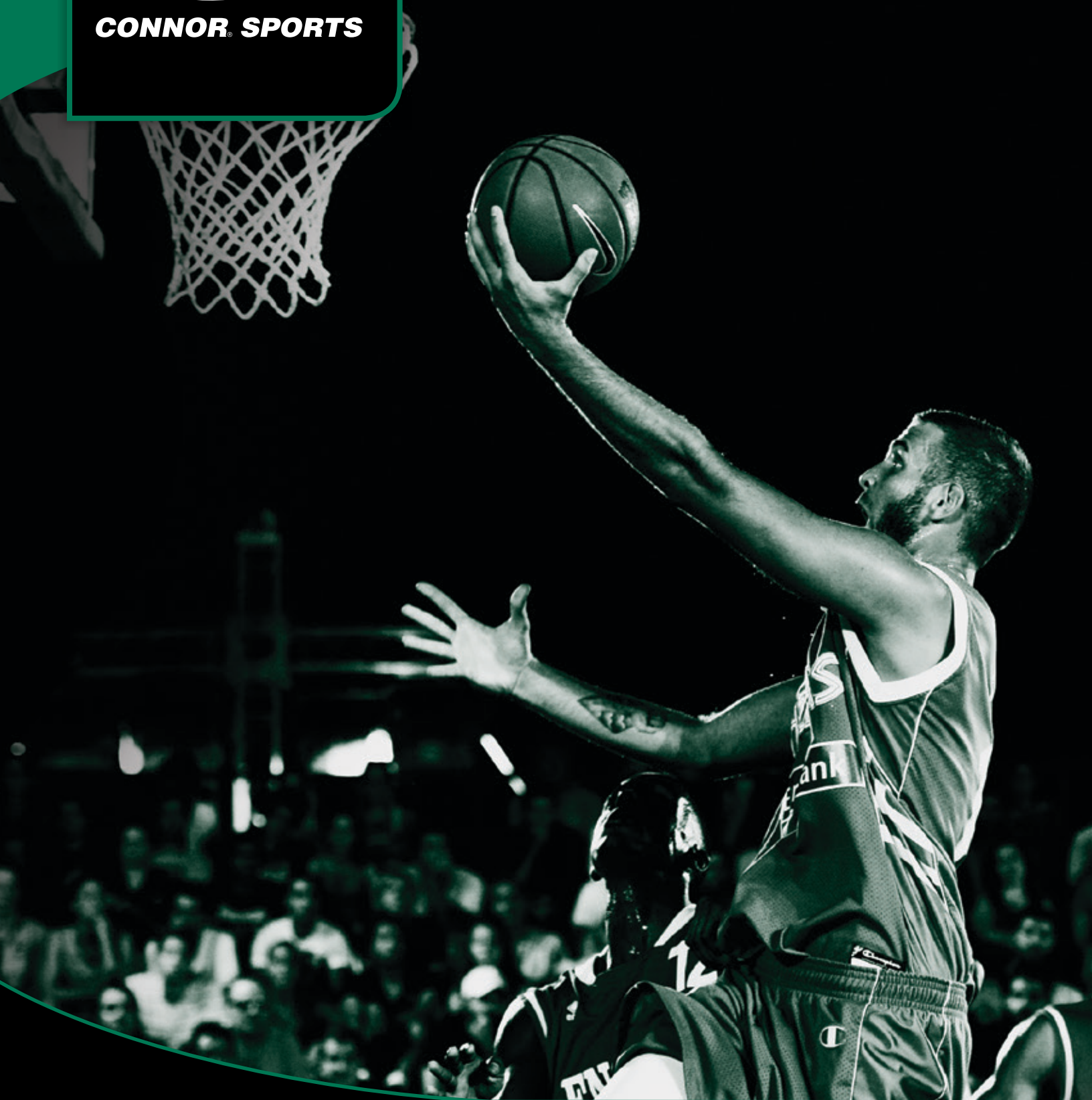




CONNOR SPORTS

RETROFLEX™

FLOATING SYSTEM



CHAMPIONS OF
SPORT



connorsports.com



RetroFlex provides a manner to address uneven substrate surfaces often found in retrofit installations, thereby eliminating the expensive approach of concrete leveling and grinding.

Resilient Rezill pads are incorporated into leveling blocks for good shock absorption value.

RETROFLEX FLOATING SYSTEM

RESILIENCE

Rezill Pads for Excellent
Resilient Life and Loading

QUICK-LEVEL ADJUSTMENT

1-Quick-Level Block, Minimally Inserted at High Areas
2-Quick-Level Block, Substantially Inserted at Low Areas

FLOORING

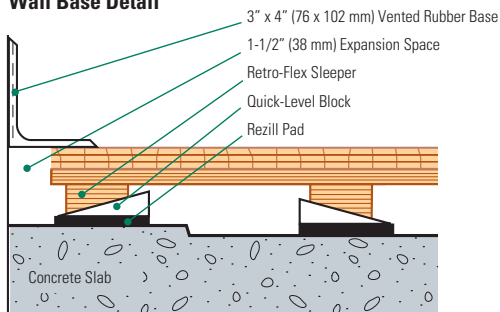
MFMA Northern
Hard Maple

SUBFLOOR CONSTRUCTION

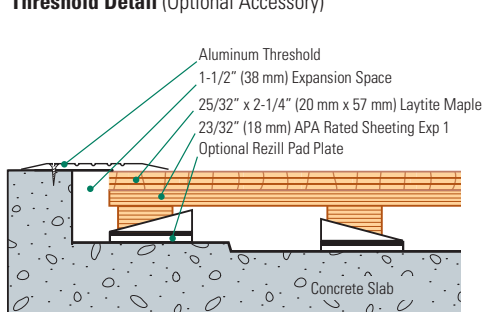
LVL Plywood Sleeper with Specially
Machined Quick Level Slots and Site Attached
Plywood Layer

Slab Depression: 23/32" (18 mm) Plywood: 25/32" (20 mm) flooring - 3 1/4" (83 mm) Plus, 33/32" (26 mm) flooring - 3 1/2" (89 mm) Plus
15/32" (12 mm) plywood: 25/32" (20 mm) flooring - 3" (76 mm) Plus, 33/32" (26 mm) flooring - 3 1/4" (83 mm) Plus

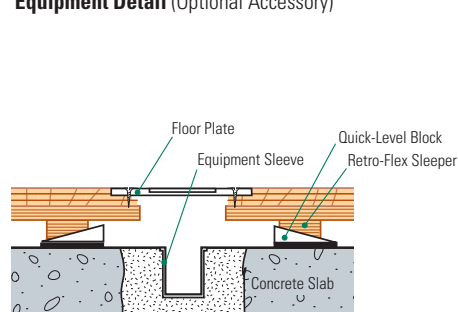
Wall Base Detail



Threshold Detail (Optional Accessory)



Equipment Detail (Optional Accessory)



Manufacturing:
ISO14001:2004
CERTIFIED

Testing Laboratory:
United States Sports
Surfacing Laboratory



Certified Testing:
ISSS Scientific
Body Membership



Green Status
Managed Forests,
Certification Available



Environmental Product Declaration
The First Sports Floor Manufacturer to Publish UL
Certified Product-Specific Environmental
Performance In Compliance with LEED V.4

For more information on RetroFlex, call 800-283-9522 or 847-290-9020. Email us at info@connorsports.com.