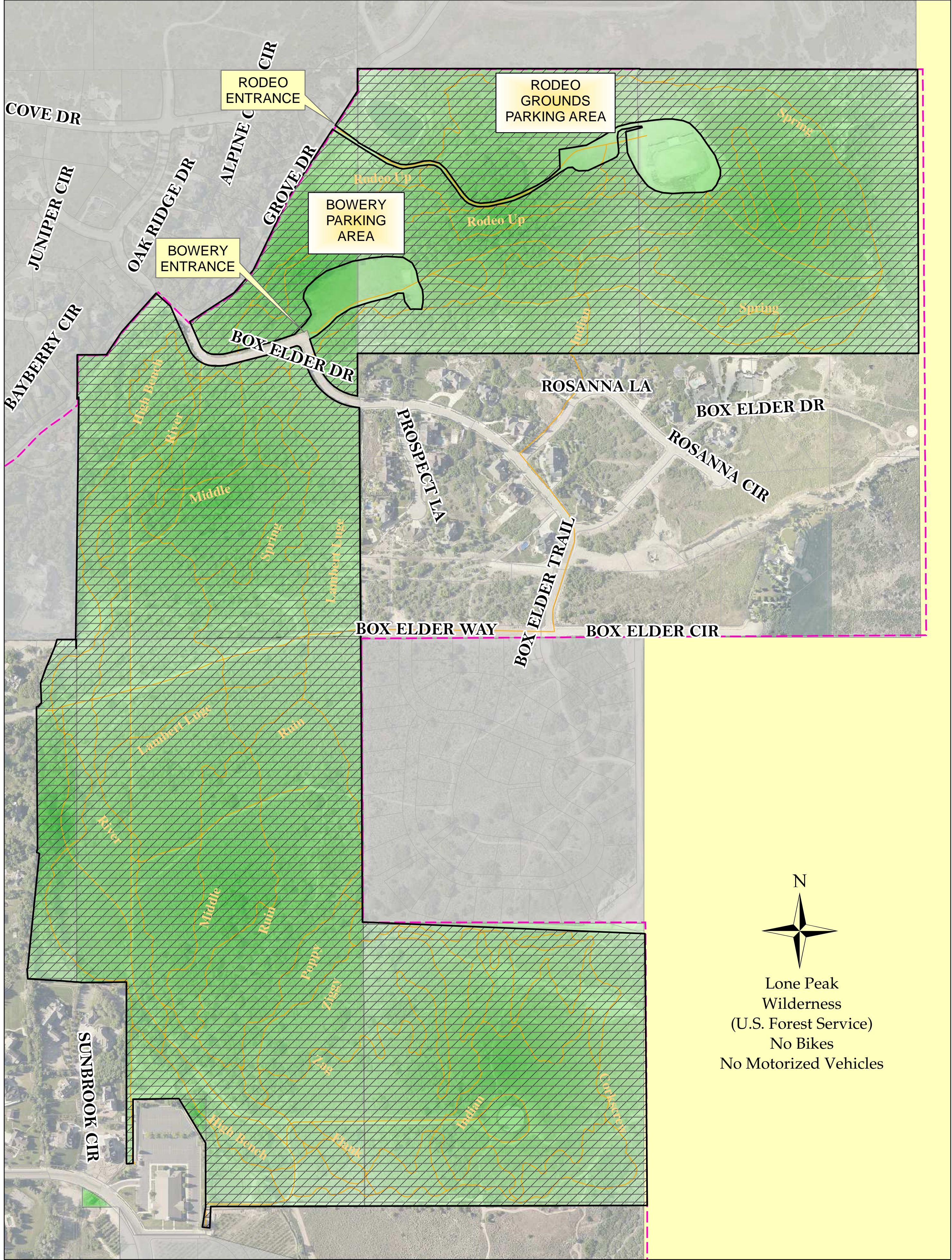


LAMBERT PARK CLOSED TO MOTORIZED USE (see map for appropriate parking)

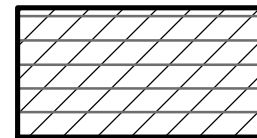


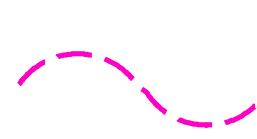
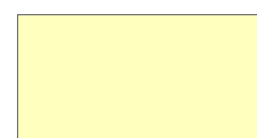



Effective July 19, 2017

Lambert Park is closed to motorized vehicles, except maintenance and emergency vehicles. See map for closed areas. This closure will be strictly enforced by the Lone Peak Police Department. Violation of this policy is a class C misdemeanor punishable by a fine not to exceed \$500, as per Section 11-400 of the Alpine City Municipal Code. No shooting is allowed in Lambert Park or within the Alpine City limits.



MAP LEGEND

-  AREA CLOSED TO MOTORIZED USE
-  Lambert Park Property
-  Lambert Park Trails 2015
-  City Boundary
-  Lone Peak Wilderness
-  County Properties